

Hisense

7.1.2CH Soundbar with Wireless Subwoofer

Model: U5120GW+

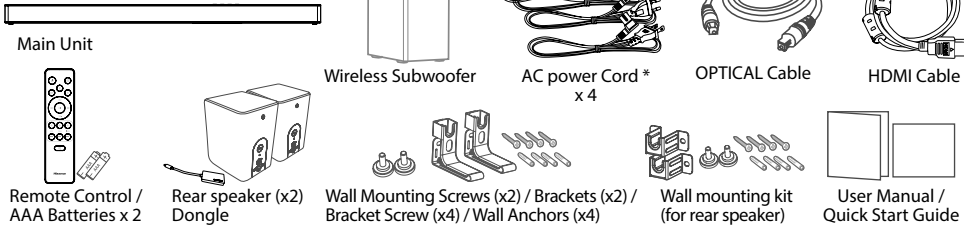
Quick Start Guide



COMPATIBLE WITH



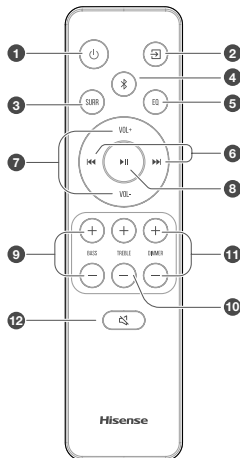
What's in the Box



* Power cord quantity and plug type vary by regions.

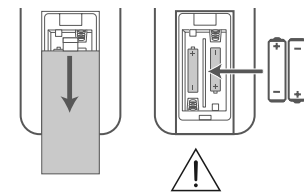
1 Remote Control

- ① **ON/OFF** Switch the unit between ON and STANDBY mode.
- ② **SURR** Select the play function.
- ③ **SURR** Adjust the surround ON/OFF.
- ④ **BT** Select the Bluetooth mode. Press and hold the **BT** button to activate the pairing function in Bluetooth mode or disconnect the existing paired Bluetooth device.
- ⑤ **EQ** Select a preset sound effect.
- ⑥ **⏮/⏭** Skip to previous/next track in BT / USB mode.
- ⑦ **VOL+/-** Increase/decrease the volume level.
- ⑧ **⏮/⏭** Play/pause/resume playback in BT / USB mode. Press and hold the **⏮/⏭** button for 3s to enter setup menu. Confirm a selection.
- ⑨ **BASS+/-** Adjust bass level.
- ⑩ **TREBLE+/-** Adjust treble level.
- ⑪ **DIMMER+/-** Adjust display brightness.
- ⑫ **MUTE** Mute or resume the sound.



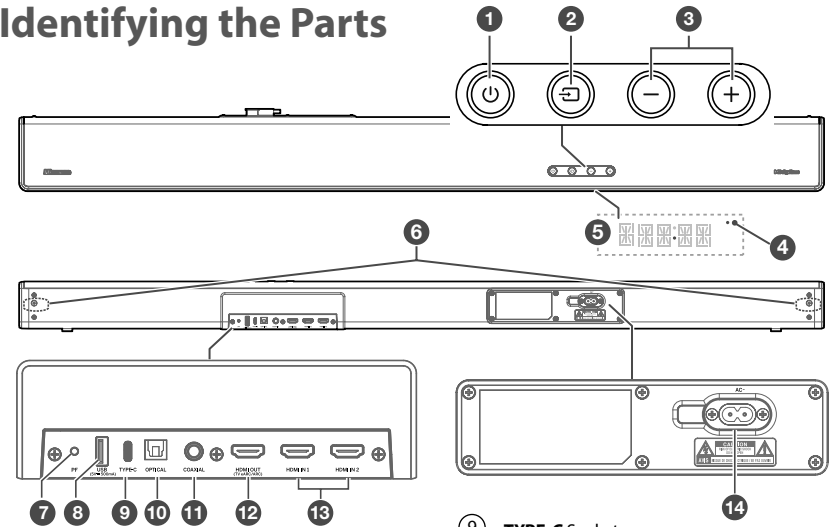
Replace the Remote Control Battery

- 1 Press and slide the back cover to open the battery compartment of the remote control.
- 2 Insert two AAA size batteries. Make sure the (+) and (-) ends of the batteries match the (+) and (-) ends indicated in the battery compartment.
- 3 Close the battery compartment cover.



- Do not mix old and new batteries;
- Do not mix alkaline, standard (Carbon-Zinc) or rechargeable (Ni-Cd, Ni-MH, etc.) batteries.

2 Identifying the Parts



① **ON/OFF** button

State	Action	Function
On		• Follow source state
Semi Standby	Press ON/OFF once	• Wi-Fi is still on. • It still supports Play-Fi and Airplay2.
Eco Standby	Press and hold ON/OFF 5 seconds	• Wi-Fi is off. • The product enters the lower power consumption mode. • Restarting the system will take a relatively longer time.

② **SOURCE** button

Select the play function.

③ **VOL+/-** buttons

Increase/decrease the volume level.

④ **Wi-Fi LED indicator**

LED State	Status
Blink	Wi-Fi Access Point (AP) mode
Double blink	Wi-Fi Protected Setup (WPS) mode
Constant on	Connected / Paired successful

⑤ **Display Window / Remote Control Sensor**

Show the current status.
Receive signal from the remote control.

⑥ **Screws**

Remove the screws then install the wall mounting screws into the back of the unit.

⑦ **PF (Wi-Fi Setup) button**

- Trigger Wi-Fi setup for Play-Fi.
- Press and hold the button:

8 seconds	Wi-Fi Access Point (AP) mode
3 seconds	Wi-Fi Protected Setup (WPS) mode

⑧ **USB** Socket

Insert the USB device to play music.

⑨ **TYPE-C** Socket

For the Dongle of wireless rear surround speaker.
① The surround kit needs to be purchased separately. This port can't be used to connect to other Type C devices.

⑩ **OPTICAL** Socket

Use to connect to the OPTICAL OUT socket on an external device.

⑪ **COAXIAL** Socket

Use to connect to the COAXIAL OUT socket on an external device.

⑫ **HDMI OUT (TV eARC/ARC) Socket**

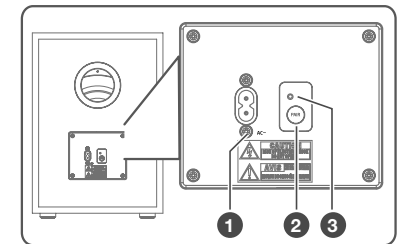
The port for connecting a TV. The port supports the eARC/ARC HDMI feature, which allows the soundbar to play audio that originates on the connected TV.

⑬ **HDMI IN (1/2) Sockets**

Two HDMI ports for connecting HDMI source devices, such as a DVD player, Blu-ray Disc™ player, or gaming console. Note that only one HDMI input is usable at a time.

⑭ **AC~** Socket

Connect to power supply.



Wireless Subwoofer

① **AC~** Socket

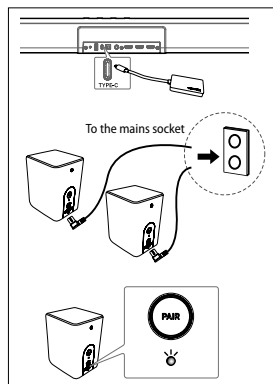
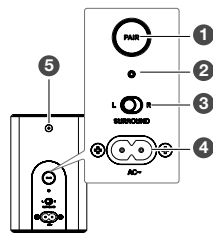
② **PAIR** button

③ **PAIR** Indicator

3 Pair up with the Rear Speakers & Subwoofer

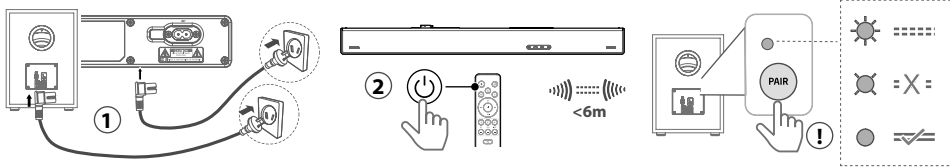
Wireless Rear Speaker

- | | |
|----------------|---|
| ① PAIR | Press activate the pairing function between the main unit and the surround. |
| ② Indicator | <ul style="list-style-type: none"> Fast blink: Rear Speaker in pairing mode Constant on: Connected / Paired successful Slow blink: Connection / Pairing Failed |
| ③ Surround L/R | Set to Left or Right Surround Speaker |
| ④ AC ~ | Connect to power supply. |
| ⑤ Screws | Remove the screws then install the wall screws into the back of the Rear Speaker |



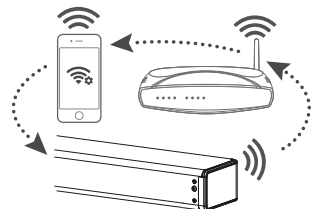
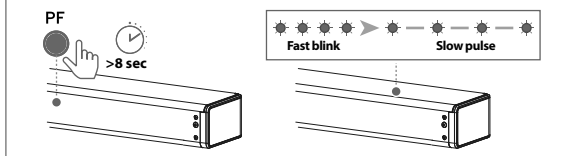
Pair up with the subwoofer

The subwoofer and the soundbar will be paired automatically when both are powered on.
 ① If no audio from the wireless subwoofer can be heard, manually pair up the subwoofer.

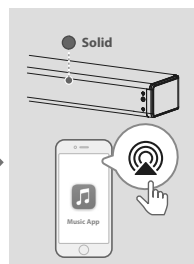
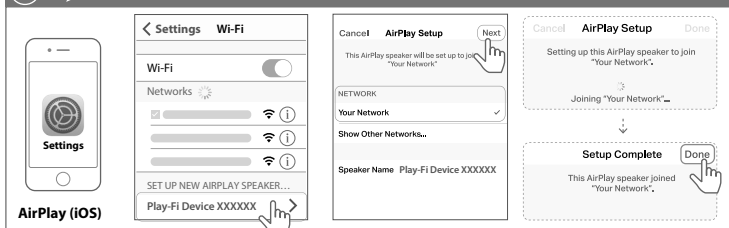


4 Connect to Wi-Fi (Wi-Fi)

① →



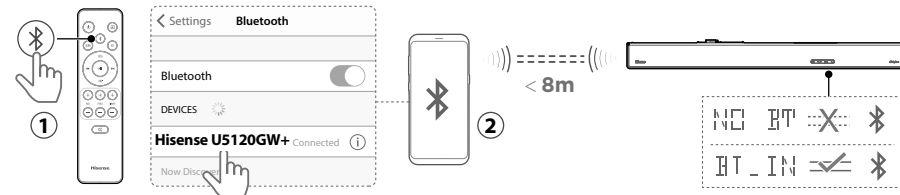
② →



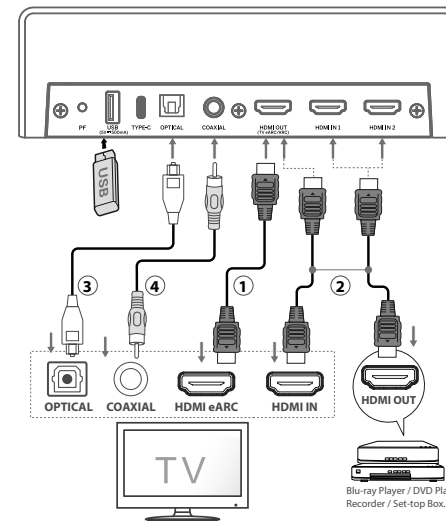
② →



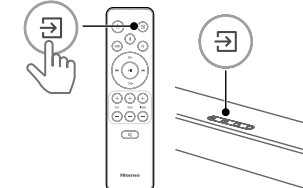
5 Bluetooth Operation (Bluetooth)



6 Select the play function (Play Function)



Display	Mode
ARC EARC	ARC
HDMI 1	HDMI IN 1
HDMI 2	HDMI IN 2
OPT	OPTICAL
COAX	COAXIAL
BT_IN NO BT	Bluetooth Connected Connection
USB	USB



7 Wall Mounting

