

# Hisense

## 7.1.2CH Soundbar with Wireless Subwoofer

### Model: U5120GW+



**dts** **x**

**dts** **play-fi**

**WiFi**  
CERTIFIED

**Chromecast**  
built-in

works with  
**Ok Google**

WORKS WITH  
**alexa**

Works with  
**Apple AirPlay**

**Spotify**

COMPATIBLE WITH

**Dolby Vision** **Dolby Atmos**

**Hi-Res**  
**AUDIO**

**4K HDR**

**eilex**  
**PRISM**

**HDMI**<sup>TM</sup>  
HIGH-DEFINITION MULTIMEDIA INTERFACE

**Bluetooth**<sup>®</sup>

## USER MANUAL

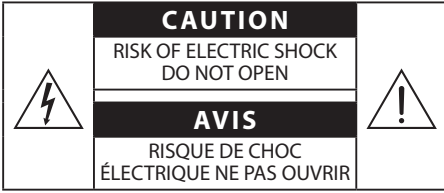


Before using the soundbar, please read this manual thoroughly and retain it for future reference.

# Contents

<b>1. Important Safety Instructions.....</b>	<b>3</b>
1.1 Safety.....	3
1.2 Warning.....	4
<b>2. What's in the Box .....</b>	<b>8</b>
<b>3. Identifying the Parts .....</b>	<b>9</b>
3.1 Main Unit .....	9
3.2 Wireless Subwoofer.....	10
3.3 Wireless Rear Speaker .....	10
3.4 Remote Control .....	10
<b>4. Preparations .....</b>	<b>11</b>
4.1 Prepare the Remote Control.....	11
4.2 Replace the Remote Control Battery .....	11
4.3 Placement and Mounting.....	11
4.4 Mounting the Soundbar on a Wall .....	12
4.5 Mounting the Rear Speakers on a Wall.....	12
<b>5. Connections .....</b>	<b>13</b>
5.1 Dolby Atmos® .....	13
5.2 DTS: X .....	13
5.3 Use the HDMI Socket.....	13
5.4 Use the OPTICAL Socket.....	14
5.5 Use the COAXIAL Socket .....	14
5.6 Connect Power .....	14
5.7 Pair up with the subwoofer.....	14
5.8 Pair up with the Rear Speakers .....	15
<b>6. Connect to Wi-Fi.....</b>	<b>15</b>
6.1 WPS mode .....	15
6.2 AirPlay setup.....	16
6.3 DTS Play-Fi app setup.....	16
6.4 Multi-room audio.....	17
6.5 Chromecast built-in .....	17
<b>7. Basic Operation .....</b>	<b>17</b>
7.1 Standby/ON .....	17
7.2 Auto-Standby / Auto-Wake Feature.....	17
7.3 Select Modes .....	17
7.4 Adjust the Bass/Treble Level.....	18
7.5 Turn the Surround Sound ON/OFF.....	18
7.6 Adjust the Volume .....	18
7.7 Adjust the Brightness.....	18
7.8 Select Equalizer (EQ) Effect.....	18
7.9 Set the Audio Delay (AV SYNC) .....	18
7.10 Factory Reset .....	18
<b>8. DTS: X Operation .....</b>	<b>18</b>
8.1 Neural:X / DRC / Dialog Control Feature.....	18
<b>9. OPTICAL / COAXIAL / HDMI / ARC Operation.....</b>	<b>19</b>
<b>10. Bluetooth Operation .....</b>	<b>19</b>
10.1 Pair Bluetooth-enabled Devices.....	19
10.2 Listen to Music from Bluetooth Device.....	20
<b>11. USB Operation .....</b>	<b>20</b>
<b>12. Setup Menu.....</b>	<b>21</b>
<b>13. Troubleshooting .....</b>	<b>22</b>
<b>14. Specifications.....</b>	<b>23</b>

# 1. Important Safety Instructions



The lightning flash with arrowhead symbol, within an equilateral triangle, is intended to alert the user to the presence of uninsulated “dangerous voltage” within the product’s enclosure that may be of sufficient magnitude as to constitute a risk of electric shock to persons.





The exclamation point within an equilateral triangle is intended to alert the user to the presence of important operating and maintenance (servicing) instructions in the literature accompanying the appliance.

## 1.1 Safety

- 1 **Read these instructions** – All the safety and operating instructions should be read before this product is operated.
- 2 **Keep these instructions** – The safety and operating instructions should be retained for future reference.
- 3 **Heed all warnings** – All warnings on the appliance and in the operating instructions should be adhered to.
- 4 **Follow all instructions** – All operating and usage instructions should be followed.
- 5 **Do not use this apparatus near water** – The appliance should not be used near water or moisture – for example, in a wet basement or near a swimming pool and the like.
- 6 **Clean only with a dry cloth.**
- 7 **Do not block any ventilation openings.** Install in accordance with the manufacturer’s instructions.
- 8 Do not install near any heat sources such as radiators, heaters, stoves, or other apparatus (including amplifiers) that produce heat.
- 9 Do not defeat the safety purpose of the polarized or grounding plug. A polarized plug has two blades with one wider than the other. A grounding plug has two blades and a third grounding prong. The wide blade or

the third prong is provided for your safety. If the provided plug does not fit into your outlet, consult an electrician for replacement of the obsolete outlet.

- 10 Protect the power cord from being walked on or pinched particularly at plugs, convenience receptacles, and the point where they exit from the apparatus.
- 11 Only use attachments/accessories specified by the manufacturer.
- 12  Use only with the cart, stand, tripod, bracket or table specified by the manufacturer, or sold with the apparatus. When a cart or rack is used, use caution when moving the cart/apparatus combination to avoid injury from tip-over.
- 13 Unplug the apparatus during lightning storms or when unused for long periods of time.
- 14 Refer all servicing to qualified personnel. Servicing is required when the apparatus has been damaged in any way, such as power supply cord or plug is damaged, liquid has been spilled or objects have fallen into the apparatus, the unit has been exposed to rain or moisture, does not operate normally, or has been dropped.
- 15  This equipment is a Class II or double insulated electrical appliance. It has been designed in such a way that it does not require a safety connection to electrical earth.
- 16 The apparatus shall not be exposed to dripping or splashing. No objects filled with liquids, such as vases, shall be placed on the apparatus.
- 17 Minimum distance around the apparatus for sufficient ventilation is 5cm.
- 18 The ventilation should not be impeded by covering the ventilation openings with items, such as newspapers, table-cloths, curtains, etc...
- 19 No naked flame sources, such as lighted candles, should be placed on the apparatus.
- 20 Batteries should be recycled or disposed of as per state and local guidelines.
- 21 The use of apparatus in moderate or tropical climates.

### Caution:

- Use of controls or adjustments or performance of procedures other than those described herein, may result in hazardous radiation exposure or other unsafe operation.
- To reduce the risk of fire or electric shock, do not expose this apparatus to rain or moisture. The apparatus must not be exposed to dripping or splashing and objects filled with liquids, such as vases, must not be placed on apparatus.
- The mains plug/appliance coupler is used as the disconnect device, the disconnect device must remain readily operable.
- Danger of explosion if battery is incorrectly replaced. Replace only with the same or equivalent type.

## 1.2 Warning

- The battery (batteries or battery pack) shall not be exposed to excessive heat such as sunshine, fire or the like.
- Before operating this system, check the voltage of this system to see if it is identical to the voltage of your local power supply.
- Do not place this unit close to strong magnetic fields.
- Do not place this unit on the amplifier or receiver.
- If any solid object or liquid falls into the system, unplug the system and have it checked by qualified personnel before operating it any further.
- Do not attempt to clean the unit with chemical solvents as this may damage the finish. Use a clean, dry or slightly damp cloth.
- When removing the power plug from the wall outlet, always pull directly on the plug, never yank on the cord.
- Changes or modifications to this unit not expressly approved by the party responsible for compliance will void the user's authority to operate the equipment.
- The rating label is pasted on the bottom or back of the equipment.

### Battery usage CAUTION

To prevent battery leakage which may result in bodily injury, property damage, or damage to the apparatus:

- Install all batteries correctly, + and - as marked on the apparatus.
- Do not mix old and new batteries.
- Do not mix alkaline, standard (Carbon-Zinc) or rechargeable (Ni-Cd, Ni-MH, etc.) batteries.
- Remove batteries when the unit is not used for a long time.

### For 5G Wi-Fi Device

The device for operation in the band 5150–5350 MHz is only for indoor use to reduce the potential for harmful interference to co-channel mobile satellite systems.

	AT	BE	BG	HR	CY	CZ	DK
	EE	FI	FR	DE	EL	HU	IE
	IT	LV	LT	LU	MT	NL	PL
	PT	RO	SK	SI	ES	SE	UK(NI)
UK							



Correct Disposal of this product. This marking indicates that this product should not be disposed with other household wastes throughout the EU. To prevent possible harm to the environment or human health from uncontrolled waste disposal, recycle it responsibly to promote the sustainable reuse of material resources. To return your used device, please use the return and collection systems or contact the retailer where the product was purchased. They can take this product for environmental safe recycling.

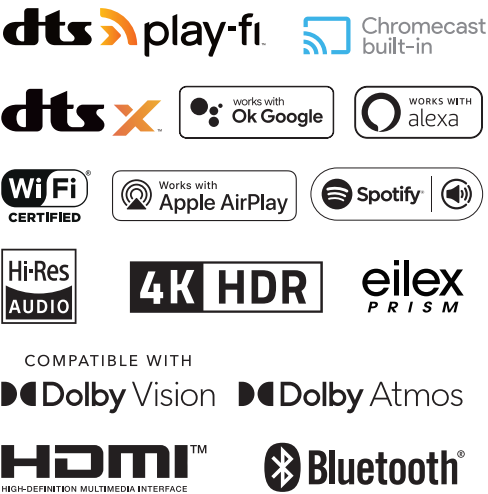
We hereby declares that this product is in compliance with the essential requirements and other relevant provisions of RED Directive 2014/53/EU and UK Radio Equipment Regulations 2017.



### Trademarks:

- For DTS patents, see <http://patents.dts.com>. Manufactured under license from DTS, Inc. (for companies headquartered in the U.S./ Japan/Taiwan) or under license from DTS Licensing Limited (for all other companies). DTS, DTS Play-Fi, Play-Fi and the DTS Play-Fi and Play-Fi logos are registered trademarks or trademarks of DTS, Inc. in the United States and other countries. © 2021 DTS, Inc. ALL RIGHTS RESERVED.
- The Wi-Fi CERTIFIED™ Logo is a registered trademark of Wi-Fi Alliance®.
- To control this AirPlay 2-enabled speaker, iOS 11.4 or later is required. Use of the Works with Apple badge means that an accessory has been designed to work specifically with the technology identified in the badge and has been certified by the developer to meet Apple performance standards. Apple® and AirPlay® are trademarks of Apple Inc., registered in the U.S. and other countries.
- The Spotify Software is subject to third party licenses found here: [www.spotify.com/connect/third-party-licenses](http://www.spotify.com/connect/third-party-licenses).

- Google, Google Play and Chromecast built-in are trademarks of Google LLC. Google Assistant is not available in certain languages and countries.
- Dolby, Dolby Vision, Dolby Atmos, and the double-D symbol are registered trademarks of Dolby Laboratories Licensing Corporation. Manufactured under license from Dolby Laboratories. Confidential unpublished works. Copyright © 2012-2020 Dolby Laboratories. All rights reserved.
- The terms HDMI and HDMI High-Definition Multimedia Interface, and the HDMI Logo are trademarks or registered trademarks of HDMI Licensing Administrator, Inc.
- The Bluetooth® word mark and logos are registered trademarks owned by Bluetooth SIG, Inc. and any use of such marks by Hisense is under license. Other trademarks and trade names are those of their respective owners.



## Supported input audio formats

Format	Function				
	OPTICAL	COAXIAL	HDMI ARC	HDMI IN 1 HDMI IN 2	HDMI eARC
LPCM 2ch	●	●	●	●	●
LPCM 5.1ch	---	---	---	●	●
LPCM 7.1ch	---	---	---	●	●
Dolby Atmos - Dolby TrueHD	---	---	---	●	●
Dolby Atmos - Dolby Digital Plus	---	---	●	●	●
Dolby TrueHD	---	---	---	●	●
Dolby Digital Plus	---	---	●	●	●
Dolby Digital	●	●	●	●	●
DTS	●	●	●	●	●
DTS-ES Discrete 6.1	●	●	●	●	●
DTS-ES Matrix 6.1	●	●	●	●	●
DTS 96/24	●	●	●	●	●
DTS-HD High Resolution Audio	---	---	---	●	●
DTS-HD Master Audio	---	---	---	●	●
DTS-HD LBR	---	---	---	●	●
DTS:X	---	---	---	●	●

● : Supported format.    --- : Unsupported format.

**Note:** The HDMI IN 1/2 jack does not support copy-protected audio formats such as Super Audio CD or DVD-Audio.

## Supported HDMI video formats

Resolution	Frame rate	3D	Color space	Color depth	[HDMI Signal Format] setting
4K 4096 x 2160p 3840 x 2160p	50/59.94/60 Hz	-	RGB 4:4:4 YCbCr 4:4:4	8 bit	[enhanced format] <sup>1)</sup>
		-	YCbCr 4:2:2	8/10/12 bit	
		-	YCbCr 4:2:0	10/12 bit	
	23.98/24/25/ 29.97/30 Hz	-	RGB 4:4:4 YCbCr 4:4:4	10/12 bit	
4K 4096 x 2106p 3840 x 2106p	50/59.94/60 Hz	-	YCbCr 4:2:0	8 bit	[standard format] <sup>2)</sup>
	23.98/24/25/ 29.97/30 Hz	-	RGB 4:4:4 YCbCr 4:4:4	8 bit	
		-	YCbCr 4:2:2	8/10/12 bit	
1920 x 1080p	25/29.97/30/50/ 59.94/60 Hz	-	RGB 4:4:4 YCbCr 4:4:4 YCbCr 4:2:2	8/10/12 bit	
	23.98/24 Hz	⦿			
1920 x 1080i	50/59.94/60 Hz	◯			
1280 x 720p	50/59.94/60 Hz	⦿			
	23.98/24/29.97/ 30 Hz	-			
720 x 480p	59.94/60 Hz	-			
720 x 576p	50 Hz	-			
640 x 480p	59.94/60 Hz	-	RGB 4:4:4		

○: Compatible with side-by-side (half width) format 3D signals

⊙: Compatible with frame packing and 3D signals in format

1) Please use a high-quality high-speed HDMI Ethernet cable that supports 18Gbps.

2) Please use a high quality high speed HDMI Ethernet cable.



**WARNING:** This product can expose you to chemicals including Lead, which is known to the State of California to cause cancer. For more information go to: [www.P65Warnings.ca.gov](http://www.P65Warnings.ca.gov).



FR

EN

## FCC INFORMATION (for US customers)

### NOTE:

- This equipment has been tested and found to comply with the limits for a Class B digital device, pursuant to Part 15 of the FCC Rules. These limits are designed to provide reasonable protection against harmful interference in a residential installation. This equipment generates, uses and can radiate radio frequency energy and, if not installed and used in accordance with the instructions, may cause harmful interference to radio communications.
- However, there is no guarantee that interference will not occur in a particular installation. If this equipment does cause harmful interference to radio or television reception, which can be determined by turning the equipment off and on, the user is encouraged to try to correct the interference by one or more of the following measures:
  - Reorient or relocate the receiving antenna.
  - Increase the separation between the equipment and receiver.
  - Connect the equipment into an outlet on a circuit different from that to which the receiver is connected.
  - Consult the dealer or an experienced radio / TV technician for help.

This device complies with Part 15 of the FCC Rules. Operation is subject to the following two conditions:

- (1) this device may not cause harmful interference, and
  - (2) this device must accept any interference received, including interference that may cause undesired operation.
- Shielded cables must be used with this unit to ensure compliance with the Class B FCC limits.

### IC Notice: CAN ICES-3(B)/NMB-3(B)

This device contains licence-exempt transmitter(s)/receiver(s) that comply with Innovation, Science and Economic Development Canada's licence-exempt RSS(s). Operation is subject to the following two conditions:

1. This device may not cause interference.
2. This device must accept any interference, including interference that may cause undesired operation of the device.

### Warning:

- This equipment should be installed and operated with minimum distance 20cm between the radiator & your body.
- Changes or modifications to this unit not expressly approved by the party responsible for compliance could void the user's authority to operate the equipment."

## Règlement de la FCC (pour les clients américains)

### REMARQUE :

- Ce dispositif a été testé et déclaré conforme aux limites d'un dispositif numérique de classe B, conformément à la partie 15 des règles de la FCC.  
Ces limites ont pour but d'assurer une protection raisonnable contre le brouillage nuisible dans une installation résidentielle. Cet équipement produit, utilise et peut émettre de l'énergie en radio fréquence et, s'il n'est pas installé et utilisé conformément aux directives, il peut causer un brouillage nuisible dans les communications radio.
- Cependant, il n'est pas garanti que des interférences ne se produiront pas dans une installation particulière. Si cet appareil provoque des interférences nuisibles à la réception radio ou de télévision, ce qui peut être déterminé en mettant l'appareil hors tension, l'utilisateur est encouragé à essayer de corriger l'interférence par une ou plusieurs des mesures suivantes :
  - Réorienter ou déplacer l'antenne de réception.
  - Augmenter la distance entre l'appareil et le récepteur.
  - Brancher l'appareil à une prise sur un circuit différent de celui sur lequel le récepteur est branché.
  - Consulter le revendeur ou un technicien radio/TV expérimenté.

Cet appareil est conforme à la partie 15 des règles de la FCC. Son fonctionnement est soumis aux deux conditions suivantes :

- (1) ce dispositif ne peut pas causer d'interférences nuisibles et
  - (2) cet appareil doit accepter toute interférence reçue, y compris les interférences qui peuvent causer un mauvais fonctionnement.
- Des câbles blindés doivent être utilisés avec cet appareil pour assurer la conformité avec les limites de la classe B de la FCC. fonctionnement de l'appareil.

### Avis d'Industrie Canada: CAN ICES-3(B)/NMB-3(B)

L'émetteur/récepteur exempt de licence contenu dans le présent appareil est conforme aux CNR d'Innovation, Sciences et Développement économique Canada applicables aux appareils radio exempts de licence. L'exploitation est autorisée aux deux conditions suivantes :

1. L'appareil ne doit pas produire de brouillage;
2. L'appareil doit accepter tout brouillage radioélectrique subi, même si le brouillage est susceptible d'en compromettre le fonctionnement.

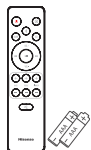
### Avvertimento :

- Pour rester en conformité avec les consignes d'exposition aux RF, placez le produit à au moins 20 cm des personnes proches.
- Les changements ou modifications de cet appareil non expressément approuvées par la partie responsable de la conformité pourraient annuler l'autorisation de l'utilisateur à utiliser l'équipement.

## 2. What's in the Box



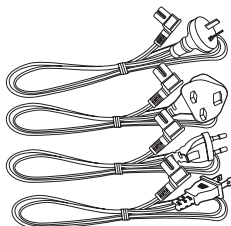
Main Unit



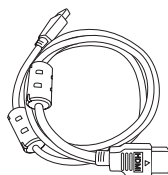
Remote Control /  
AAA Batteries x 2



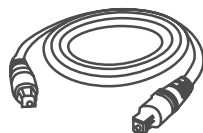
Wireless Subwoofer



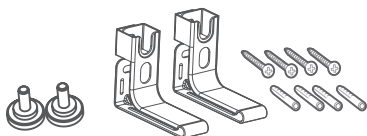
AC power Cord \*  
(x4)



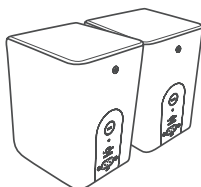
HDMI Cable



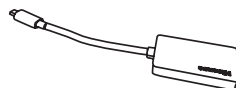
Optical Cable



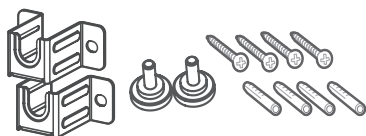
Wall Mounting Screws (x2) / Brackets (x2) /  
Bracket Screw (x4) / Wall Anchors (x4)  
(for main unit)



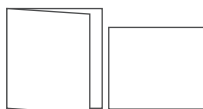
Rear speaker (x2)



Dongle



Wall mounting kit  
(for rear speaker)



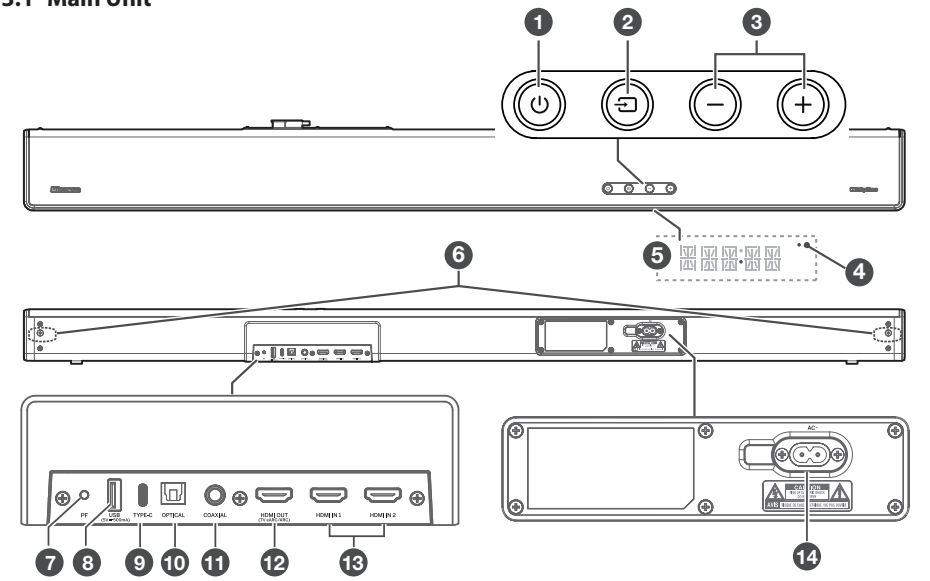
User Manual /  
Quick Start Guide

- \* Power cord quantity and plug type vary by regions.
- Images, illustrations and drawings shown on this User Manual are for reference only. Actual product may vary in appearance.
- Design and specifications are subject to change without notice.



### 3. Identifying the Parts

#### 3.1 Main Unit



① (ON/OFF) button

State	Action	Function
On		• Follow source state
Semi Standby	Press  once	• Wi-Fi is still on. • It still supports Play-Fi and Airplay2.
Eco Standby	Press and hold  5 seconds	• Wi-Fi is off. • The product enters the lower power consumption mode. • Restarting the system will take a relatively longer time.

② (SOURCE) button  
Select the play function.

③ VOL+ /VOL- buttons  
Increase/decrease the volume level.

④ Wi-Fi LED indicator

LED State	Status
Blink	Wi-Fi Access Point (AP) mode
Double blink	Wi-Fi Protected Setup (WPS) mode
Constant on	Connected / Paired successful

⑤ Display Window / Remote Control Sensor  
Show the current status.  
Receive signal from the remote control.

⑥ Screws  
Remove the screws then install the wall mounting screws into the back of the unit.

⑦ PF (Wi-Fi Setup) button  
• Trigger Wi-Fi setup for Play-Fi.

• Press and hold the button :

8 seconds	Wi-Fi Access Point (AP) mode
3 seconds	Wi-Fi Protected Setup (WPS) mode

⑧ USB Socket  
Insert the USB device to play music.

⑨ TYPE-C Socket  
For the Dongle of wireless rear surround speaker. This port can't be used to connect to other Type C devices.

⑩ OPTICAL Socket  
Use to connect to the OPTICAL OUT socket on an external device.

⑪ COAXIAL Socket  
Use to connect to the COAXIAL OUT socket on an external device.

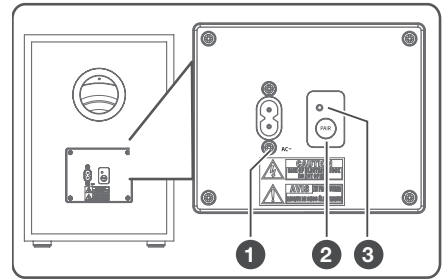
⑫ HDMI OUT (TV eARC/ARC) Socket  
The port for connecting a TV. The port supports the eARC/ARC HDMI feature, which allows the soundbar to play audio that originates on the connected TV.

⑬ HDMI IN (1/2) Sockets  
Two HDMI ports for connecting HDMI source devices, such as a DVD player, Blu-ray Disc™ player, or gaming console. Note that only one HDMI input is usable at a time.

⑭ AC~ Socket  
Connect to power supply.

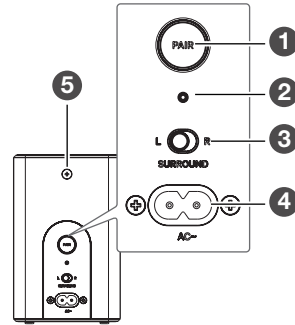
### 3.2 Wireless Subwoofer

- ① **AC~ Socket**  
Connect to power supply.
- ② **PAIR button**  
Press activate the pairing function between the main unit and the subwoofer.
- ③ **PAIR Indicator**  
Light stops blinking once the Subwoofer is paired with the Soundbar.



### 3.3 Wireless Rear Speaker

①	<b>PAIR button</b>	Press activate the pairing function between the main unit and the surround.
②	<b>Indicator</b>	
	• Fast blink	Rear Speaker in pairing mode
	• Constant on	Connected / Paired successful
	• Slow blink	Connection / Pairing Failed
③	<b>Surround L/R</b>	Set to Left or Right Surround Speaker
④	<b>AC ~</b>	Connect an AC power cord
⑤	<b>Screws</b>	Remove the screws then install the wall screws into the back of the Rear Speaker

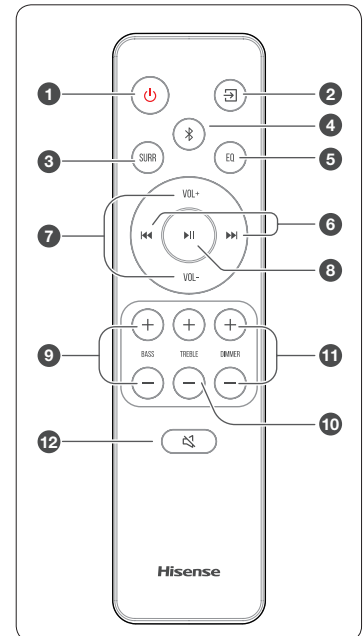


### 3.4 Remote Control

- ① **⏻ (ON/OFF)**

State	Action	Function
<b>On</b>		• Follow source state
<b>Semi Standby</b>	Press <b>⏻</b> once	• Wi-Fi is still on. • It still supports Play-Fi and Airplay2.
<b>Eco Standby</b>	Press and hold <b>⏻</b> 5 seconds	• Wi-Fi is off. • The product enters the lower power consumption mode. • Restarting the system will take a relatively longer time.

- ② **📺 (SOURCE)** Select the play function.
- ③ **SURR** Adjust the surround ON/OFF.
- ④ **📶 (BT)** Select the Bluetooth mode. Press and hold the **📶 (BT)** button to activate the pairing function in Bluetooth mode or disconnect the existing paired Bluetooth device.
- ⑤ **EQ** Select a preset sound effect.
- ⑥ **⏮ / ⏭** Skip to previous/next track in BT / USB mode.
- ⑦ **VOL+ / VOL-** Increase/decrease the volume level.
- ⑧ **⏮** Play/pause/resume playback in BT / USB mode. Press and hold the **⏮** button for 3s to enter setup menu. Confirm a selection.



- ⑨ **BASS+/-** Adjust bass level.
- ⑩ **TREBLE+/-** Adjust treble level.
- ⑪ **DIMMER+/-** Adjust display brightness.
- ⑫ **🔊 (MUTE)** Mute or resume the sound.

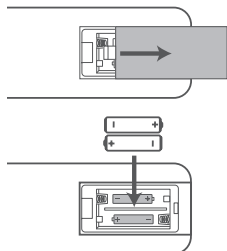
## 4. Preparations

### 4.1 Prepare the Remote Control

The provided Remote Control allows the unit to be operated from a distance.

- Even if the Remote Control is operated within the effective range 19.7 feet (6m), remote control operation may be impossible if there are any obstacles between the unit and the remote control.
- If the Remote Control is operated near other products which generate infrared rays, or if other remote control devices using infra-red rays are used near the unit, it may operate incorrectly. Conversely, the other products may operate incorrectly.

### 4.2 Replace the Remote Control Battery



- 1 Press and slide the back cover to open the battery compartment of the remote control.
- 2 Insert two **AAA** size batteries. Make sure the (+) and (-) ends of the batteries match the (+) and (-) ends indicated in the battery compartment.
- 3 Close the battery compartment cover.

### Precautions Concerning Batteries

- Be sure to insert the batteries with correct positive “ $\oplus$ ” and negative “ $\ominus$ ” polarities.
- Use batteries of the same type. Never use different types of batteries together.
- Either rechargeable or non-rechargeable batteries can be used. Refer to the precautions on their labels.
- Be aware of your fingernails when removing the battery cover and the battery.
- Do not drop the remote control.
- Do not allow anything to impact the remote control.
- Do not spill water or any liquid on the remote control.
- Do not place the remote control on a wet object.
- Do not place the remote control under direct sunlight or near sources of excessive heat.

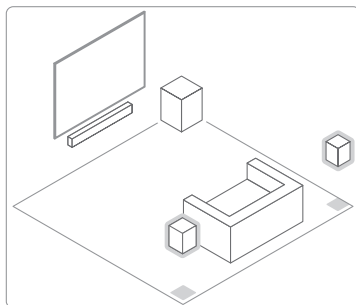
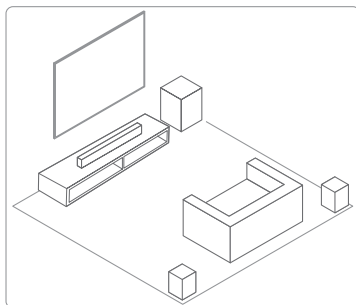
- Remove the battery from the remote control when not in use for a long period of time, as corrosion or battery leakage may occur and result in physical injury, and/or property damage, and/or fire.
- Do not use any batteries other than those specified.
- Do not mix new batteries with old ones.
- Never recharge a battery unless it is confirmed to be a rechargeable type.

### 4.3 Placement and Mounting

#### Placement

The following are available when the rear speakers are used with the soundbar.

- You can enjoy the surround sound that makes you feel as if you were actually listening to a live performance.
- You can update the software of the rear speakers. For details, refer to the Operating Instructions supplied with the soundbar.



#### Note

- The rear speakers are designed exclusively for use with the soundbar and cannot be used with other devices.
- Install the rear speakers vertically.

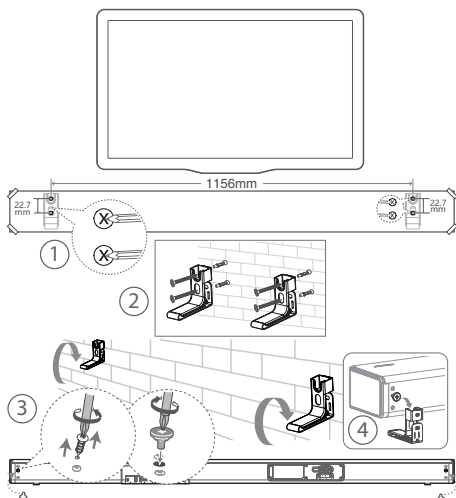
## 4.4 Mounting the Soundbar on a Wall

### Note:

- Installation must be carried out by qualified personnel only. Incorrect assembly can result in severe personal injury and property damage (if you intend to install this product yourself, you must check for installations such as electrical wiring and plumbing that may be buried inside the wall). It is the installer's responsibility to verify that the wall will safely support the total load of the unit and wall brackets.
- Additional tools (not included) are required for the installation.
- Do not overtighten screws.
- Keep this instruction manual for future reference.
- Use an electronic stud finder to check the wall type before drilling and mounting.

### WARNING

- To prevent injury, this apparatus must be securely attached to the floor/wall in accordance with the installation instructions.
- Suggested wall mounting height:  $\leq 1.5$  meters.



1. Drill 4 parallel holes ( $\varnothing 5.5-6$  mm each according to wall type) in the wall. The distance between the holes should be **1156 mm**.
2. Firmly fix 1 dowel into each hole in the wall if necessary. Tighten the wall mount brackets on the wall with screws and screwdriver. Make sure that they are securely installed.

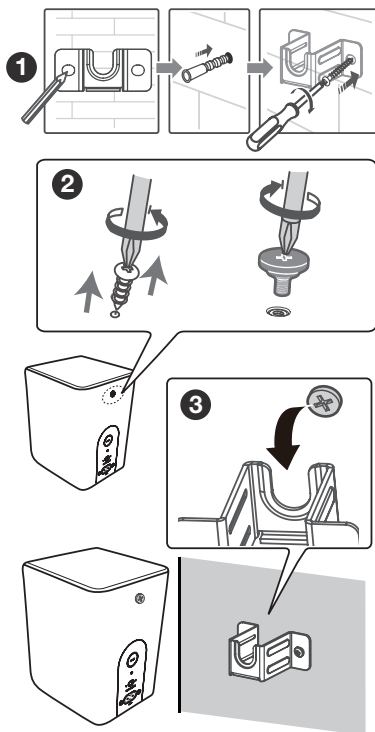
3. Remove the screws at the back of the unit. Install the wall mounting screws into the back of the unit.
4. Lift the unit onto the wall mount brackets and slot into place.

## 4.5 Mounting the Rear Speakers on a Wall

You can mount the rear speakers on a wall.

- 1 Tighten the wall mount brackets on the wall with screws and screwdriver (not included). Make sure that they are securely installed.
- 2 Remove the screws at the back of the unit. Install the wall mounting screws into the back of the unit.
- 3 Hang the rear speaker by confirming the right/left of the rear speaker.

Check the **Surround L/R** on the rear of the rear speaker. "**Surround R**" is for the right, "**Surround L**" is for the left.



## 5. Connections

### 5.1 Dolby Atmos®

Dolby Atmos® gives you immersive listening experience by delivering sound in three dimensional space, and all the richness, clarity, and power of Dolby sound. For more information, please visit [dolby.com/technologies/dolby-atmos](https://dolby.com/technologies/dolby-atmos)

### 5.2 DTS: X

DTS: X The border sound is no longer constrained by fixed-position speaker placement or specific channel signals. It can be flexibly debugged according to the playback environment to achieve the best sound performance in this environment.

#### For using Dolby Atmos® / DTS: X

Dolby Atmos® / DTS: X is available in HDMI IN 1 / HDMI IN 2 and HDMI eARC/ARC mode. For the details of the connection, please refer to **"HDMI Connection"**.

1. To use Dolby Atmos® / DTS: X in HDMI IN 1 and HDMI IN 2 mode, Your TV had to support Dolby Atmos® / DTS: X or HDMI audio passthrough.
2. Make sure that "Bitstream", "RAW" or "No Encoding" is selected for bitstream in the audio output of the connected external device (e.g. Blu-ray DVD player, TV etc.).
3. While entering Dolby Atmos / DTS: X / Dolby Digital / PCM format, the soundbar will show DOLBY ATMOS / DTS: X / DOLBY AUDIO / PCM AUDIO.

### 5.3 Use the HDMI Socket

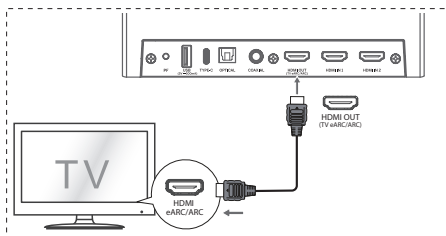
Some 4K HDR TVs require the HDMI input or picture settings to be set for HDR content reception. For further setup details on HDR display, please refer to the instruction manual of your TV.

Using HDMI to connect the soundbar, AV equipment and TV:

#### Method 1:

##### eARC / ARC (Audio Return Channel)

The eARC / ARC (Audio Return Channel) function allows you to send audio from your ARC- compliant TV to your soundbar through a single HDMI connection. To enjoy the ARC function, please ensure your TV is both HDMI-CEC and ARC compliant and set up accordingly. When correctly set up, you can use your TV remote control to adjust the volume output (VOL +/- and MUTE) of the soundbar.



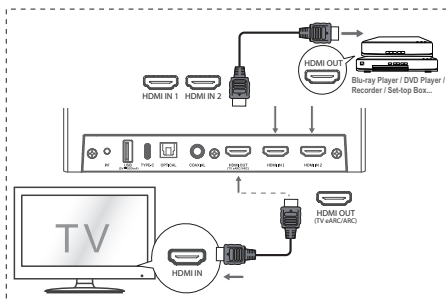
- Connect the HDMI cable from unit's **HDMI OUT (TV eARC/ARC)** socket to the HDMI (ARC) socket on your ARC compliant TV. Then press the remote control to select **HDMI eARC**.

#### Tips:

- Your TV must support the HDMI-CEC and ARC function. HDMI-CEC and ARC must be set to On.
- The setting method of HDMI-CEC and ARC may differ depending on the TV. For details about ARC function, please refer to the owner's manual.
- ARC only works with devices that are HDMI ARC capable as well as with an HDMI 1.4 cable (and higher).

#### Method 2: Standard HDMI

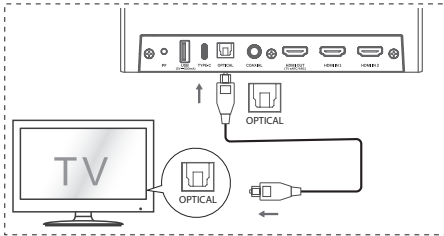
- If your TV is not HDMI ARC-compliant, connect your soundbar to the TV through a standard HDMI connection.



1. Use an HDMI cable to connect the soundbar's **HDMI OUT (eARC/ARC)** socket to the TV's HDMI IN socket.
2. Use an HDMI cable to connect the soundbar's **HDMI IN (1 or 2)** socket to your external devices (e.g. games consoles, DVD players and blu-ray).

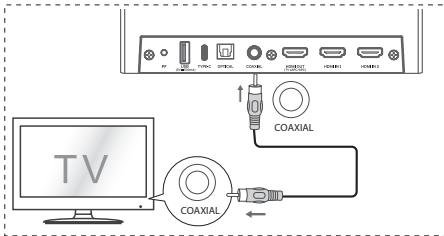
### 5.4 Use the OPTICAL Socket

- Connect an OPTICAL cable to the TV's OPTICAL OUT socket and the **OPTICAL** socket on the unit.



### 5.5 Use the COAXIAL Socket

- You also can use the COAXIAL cable to connect the TV's COAXIAL OUT socket and COAXIAL socket on the unit.



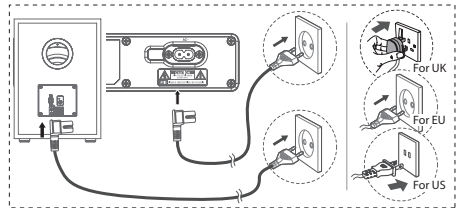
**Tip:** The unit may not be able to decode all digital audio formats from the input source. In this case, the unit will mute. This is NOT a defect. Ensure that the audio setting of the input source (e.g. TV, game console, DVD player, etc.) is set to **PCM** or **Dolby Digital** (Refer to the user manual of the input source device for its audio setting details) with HDMI / OPTICAL / COAXIAL input.

### 5.6 Connect Power

- **Risk of product damage!** Ensure that the power supply voltage corresponds to the voltage printed on the back or the underside of the unit.
- Before connecting the AC power cord, ensure you have completed all other connections.
- **Soundbar**  
Connect the mains cable to the **AC~** socket of the main unit and then into a mains socket.

- **Subwoofer**

Connect the mains cable to the **AC~** socket of the Subwoofer and then into a mains socket.



\* Power cord quantity and plug vary by regions.

### 5.7 Pair up with the subwoofer

#### Automatic pairing

The subwoofer and soundbar will automatically pair when both units are plugged into the mains sockets and turned on. No cable is needed for connecting the two units.


- Determine the status based on the wireless Subwoofer indicator.

LED State	Status
Fast blink	Subwoofer in pairing mode
Constant on	Connected / Paired successful
Slow blink	Connection / Pairing Failed

#### NOTE:

- Do not press the **Pair** button on the rear of the subwoofer, except for manual pairing.
- If the automatic pairing fails, pair the subwoofer with the main unit manually.

#### Manual pairing

1. Ensure that all the cables are well connected and the main unit is in Standby mode.
2. Press and hold the **Pair** button on the rear of the subwoofer for a few seconds. The subwoofer will enter the pairing mode and the Pair Indicator will blink quickly.
3. Press  the button on the main unit or on the remote control to switch the main unit on.
4. After the wireless connection succeeded, the Pair Indicator will light up.
5. If the Pair indicator blinks, the wireless connection has failed. Unplug the cable of the subwoofer and then reconnect the main cable after 3 minutes. Repeat step 1 ~ 4.

## NOTE:

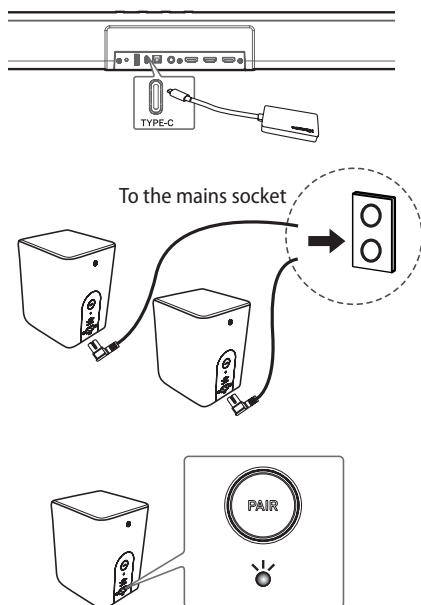
- If the wireless connection fails again, check if there is conflict or strong interference (for example, interference from an electronic device) around your location. Remove these conflicts or strong interferences and repeat the above procedures.
- The subwoofer should be within 6m (18 feet) of the soundbar in an open area.
- If the main unit is not connected with the subwoofer and it is in On mode, the POWER Indicator will flash. Follow step 1 ~ 4 above to pair the subwoofer to the main unit.

## 5.8 Pair up with the Rear Speakers

### Note

- Surround should be installed within a 6m range of the main soundbar.
- When manually pair up soundbar with surround L, the surround R must be powered off. When manually pair up soundbar with surround R, the surround L must be powered off.
- Do not press the **Pair** button on the rear of the surround except for manual pairing.

## Automatic Pairing



- 1 Insert the Dongle of wireless rear surround speaker.
- 2 Connect the power cord to both soundbar & surround & connect both to a power source.
- 3 Turn on the soundbar. Both soundbar & surround R/L will connect automatically wirelessly.

## Manual pairing

- If no audio from the surround can be heard, manually pair up the surround.
1. Ensure that all the cables are well connected and the soundbar is in Standby mode.
  2. Press and hold the Pair button on the rear of the surround for a few seconds. The surround will enter the pairing mode and the Pair Indicator will blink quickly.
  3. Turn on the soundbar. Both soundbar & surround R/L will connect automatically wirelessly.
- The Pair indicator on the surround will become solid when successful.
4. If the Pair indicator blinks, the wireless connection has failed. Unplug the cable of the surround and then reconnect the main cable after 4 minutes. Repeat step 1 ~ 3.

## 6. Connect to Wi-Fi

### 6.1 WPS mode

If your router has Wi-Fi Protected Setup (WPS), you can set up the connection without entering a password.

1. Press and hold the **PF** (Wi-Fi Setup) button for 4 seconds. You will hear a tone and the Wi-Fi light will begin double blink.
2. Press the WPS button on your router. The button is normally marked with this WPS logo.



3. Follow the instructions in the DTS Play-Fi app to start pairing.

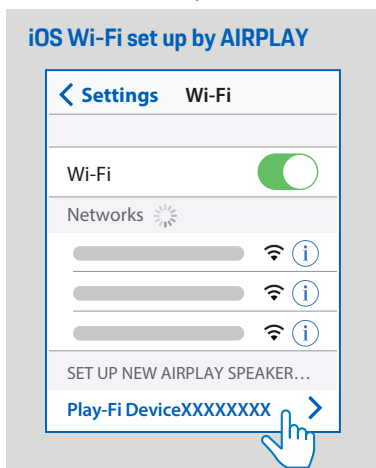
## Note

- WPS is not a standard feature on all routers. If your router does not have WPS then use Standard Wi-Fi Setup.
- Press the PF (Wi-Fi Setup) button once if you want to exit the WPS mode or it will automatically exit after 2 minutes.

## 6.2 AirPlay setup

Use AirPlay to set up the Wi-Fi connection of iOS device (iOS7 or later) and Soundbar.

- 1 Press and hold **PF** (Wi-Fi Setup) button located at the back cabinet for 8 sec to trigger the Wi-Fi connection.
- 2 Wait until the Wi-Fi light indicator turns from a fast blink to a slow pulse. A slow pulse indicates that the speaker is entering the Wi-Fi setup mode.
- 3 On your iOS device go to: **Settings > Wi-Fi > select network [Play-Fi device (xxxxxx)]**



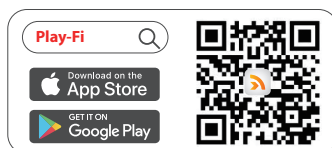
- 4 Soundbar will be automatically recognized as Airplay device. Tap on [Set up new Air-Play speaker].
- 5 Tap on [Show Other Networks...] and select your home network to which you want soundbar to connect.
- 6 After a successful Wi-Fi connection, the Wi-Fi light indicator stops pulsing and stays on. After setting up this product on your Wi-Fi network, you can control it from any smartphone or tablet on the same network.

## 6.3 DTS Play-Fi app setup

### (For iOS and Android version)

By connecting this unit and mobile phones, tablets (such as iPad, iPhone, iPod touch, Android phones, etc.) to the same Wi-Fi network, you can then use the DTS Play-Fi to control the soundbar to listen to audio files.

- 1 Connect your phone or tablet to the same Wi-Fi network that you want to connect your soundbar.
- 2 Download and install the DTS Play-Fi on a phone or tablet.



- Make sure your router is turned on and working properly.
- 3 Press and hold **PF** (Wi-Fi Setup) button located at the back cabinet for 8 sec to trigger the Wi-Fi connection.
  - Until the speaker make a second tone and then release the button.
  - 4 Wait until the Wi-Fi light indicator on the back cabinet goes from a fast blink to a slow pulse. When it begins pulsing slowly, it indicates that the speaker is entering the Wi-Fi setup mode.
  - 5 Launch the DTS Play-Fi. Follow the instructions in the App to connect this product to your Wi-Fi network.
  - 6 After a successful Wi-Fi connection, the Wi-Fi light indicator stops pulsing and stays on. After setting up this product on your Wi-Fi network, you can control it from any smartphone or tablet on the same network.
  - When using the app to play music, the display panel will show PLAY-FI.



- 7 After connection, you can change the device name. There are several names to choose from or create your own by choosing Custom Name at the end of the name list. Otherwise, it follows the default name.
- 8 After connection, this product may perform a software update. Upgrade to the latest software when it is your first time set up. The software upgrade may take several minutes. Do not unplug your speaker, turn off your device, or leave the network during the update.





## Note

- After connection, the product may perform a software update. Upgrade is required after initial setup. Without the upgrade, not all product features can be available.
- When the first time setup is not successful, hold down the Wi-Fi button on Soundbar for 8 seconds until you hear the second tone and the Wi-Fi light changes to slow pulse. Reset the Wi-Fi connection, restart the app and start the setup again.
- If you want to change from one network to another, you need to setup the connection again. Press hold down the **PF** (Wi-Fi Setup) button on the Soundbar for 8 seconds to reset the Wi-Fi connection.

## 6.4 Multi-room audio

- This soundbar can be used as part of multi-room speaker setup. This means that the same music can be played from your soundbar and other compatible speakers simultaneously throughout your home.
- To use this feature, make sure the soundbar and your smartphone / tablet are on the same network. You can use Google Home, Airplay 2 or DTS Play-Fi app to control compatible multiroom speakers. You can then play the music on multiple speakers at the same time, assign speakers to different groups, control the volume individually, or use master volume to change the volume on all speakers at the same time.


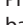
## 6.5 Chromecast built-in



- This soundbar supports Chromecast built-in feature that allows you to cast music from Chromecast compatible apps to your soundbar.
- To use this feature, make sure the soundbar and your smartphone / tablet are on the same network. Start playing music on a Chromecast-enabled app and cast it to your soundbar simply by clicking the (cast) button and selecting the soundbar from the list.

# 7. Basic Operation

## 7.1 Standby/ON

When you first connect the main unit to the mains socket, the main unit will be in Standby mode.

- Press the  button on the unit or on the remote control to switch the unit ON.
- Press the  button again to switch the unit back to STANDBY mode.

State	Action	Function
<b>On</b>		• Follow source state
<b>Semi Standby</b>	Press  once	• Wi-Fi is still on. • It still supports Play-Fi and Airplay2.
<b>Eco Standby</b>	Press and hold  5 seconds	• Wi-Fi is off. • The product enters the lower power consumption mode. • Restarting the system will take a relatively longer time.

- Disconnect the mains plug from the mains socket if you want to switch the unit OFF completely.


## 7.2 Auto-Standby / Auto-Wake Feature

- **[Auto-Standby]** Your soundbar has been programmed to enter Standby mode automatically when no audio is detected for 15 minutes. For example, this would happen when pausing playback, or should the soundbar be left on accidentally.
- **[Auto-Wake]** If a TV or an external device is connected (COAXIAL/OPTICAL socket), the unit will switch on automatically when the TV or the external device is switched on.

**To disable this feature, please follow the steps below:**

1. During ON mode, pointing the remote at the soundbar, press and hold the **▶▶** button for 3 seconds to open the menu.
- The unit's display will scroll "**MENU**".
2. Press the **▶▶** button 6 times in succession: the display shows: **Auto Wake [ON / OFF]**.  
or  
Press the **▶▶** button 7 times in succession, the display shows: **Auto Standby [ON / OFF]**.
3. Select the content with **VOL +/-** button on the remote control, and then press **▶▶** to confirm your selection and exit the settings.
- Repeating these steps will toggle the feature "**ON**" and "**OFF**".

## 7.3 Select Modes

- Press the  (SOURCE) button repeatedly on the unit or on the remote control to select the **OPTICAL**, **COAXIAL**, **HDMI ARC**, **HDMI 1**, **HDMI 2**, **BT** (Bluetooth) and **USB** mode.

- Press the **BT** button on the remote control to select the **BT** (Bluetooth) mode.
- The selected mode will show on the display.

Display	Mode
ARC EARC	<b>ARC</b>
HDMI 1	<b>HDMI IN 1</b>
HDMI 2	<b>HDMI IN 2</b>
OPT	<b>OPTICAL</b>
COAX	<b>COAXIAL</b>
BT IN NO BT	<b>Bluetooth</b> Connected Connection
USB	<b>USB</b>



#### Note

- Play-Fi is not an optional source. Play-Fi needs to be directly controlled by app.

### 7.4 Adjust the Bass/Treble Level

- Press the **BASS +/-** buttons on the remote control to adjust bass level (bass +5 ~ bass -5).
- Press the **TREBLE +/-** buttons on the remote control to adjust treble level (treble +5 ~ treble -5).

### 7.5 Turn the Surround Sound ON/OFF

- Press the **SURR** button on the remote control to turn on the surround sound. Press this button again to turn off the surround sound.

### 7.6 Adjust the Volume

- Press the **VOL+ / VOL-** buttons on the unit or on the remote control to adjust the volume.
- If you wish to turn the sound off, press the **MUTE** button on the remote control. Press the **MUTE** button again or press the **VOL+ / VOL-** buttons to resume normal listening.

### 7.7 Adjust the Brightness

- Press the **DIMMER +/-** button on the remote control to select brightness level.

### 7.8 Select Equalizer (EQ) Effect

- While playing, press the **EQ** button on the remote control to select desired preset equalizers: **MUSIC, MOVIE, NEWS, SPORT, NIGHT, GAME, AI EQ**.

### 7.9 Set the Audio Delay (AV SYNC)

- Video image processing, sometimes longer than the time required to process the audio signal. This is called "delayed." Audio Delay feature is designed to remedy this delay.
  - Set the audio delay, provided only for the current playback mode. (As provided in the HDMI ARC audio delay mode, the delay mode is valid only for the HDMI ARC).
  - By default, the audio delay is set to 00.
- During ON mode, press and hold the **II** button for 3 seconds to open the menu, then press the **III** button 9 times in succession. The unit's display will scroll "LT 00".
  - Press the **VOL+/-** buttons will be a 10 ms frequency hopping to adjust the delay time. Set 200 ms maximum delay.
  - Press the **II** button or exit settings 10S.

#### Tip:

- Adjustment range: **[00~200ms]**
- The audio delay setting is only valid for digital audio (eg HDMI IN, HDMI ARC, COAXIAL, OPTICAL).

### 7.10 Factory Reset

Reset device to default setting

- In **standby** mode, press the [**I<<<**, **>>>I**, **VOL+**, **BASS-**] buttons on the remote control them in sequence, the display shows "RESET" to reset the factory default settings of the host.
- Set is ON, press and hold the **MUTE** button until the display shows "RESET" to reset the Wi-Fi module to the factory default settings.

## 8. DTS: X Operation

### 8.1 Neural:X / DRC / Dialog Control Feature

- DTS:X® technologies provide users with virtual multi-channel virtual surround effects, creating an immersive audio volume.
- During ON mode, pointing the remote at the soundbar, press and hold the **II** button for 3 seconds to open the menu.
  - The unit's display will scroll "MENU".
  - Neural:X Setting:** Press the **III** button 11 times in succession: the display shows: **Dts Neural [ON / OFF]**.
- or

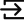
**DRC Setting:** Press the ►►I button 12 times in succession, the display shows: **Dts Drc Heavy / Dts Drc Mid / Dts Drc Min.**

or

**Adjust the Dialog Control:** Press the ►►I button 13 times in succession, the display shows: **Dts Dialog Control 0~6.**

4. Select the content with **VOL +/-** buttons on the remote control, and then press ►►I to confirm your selection and exit the settings.
- Repeating these steps will toggle the feature ON and OFF.

## 9. OPTICAL / COAXIAL / HDMI / ARC Operation

- 1 Ensure that the unit is connected to the TV or audio device.
- 2 Press the  (SOURCE) repeatedly on the unit or on the remote control to select the **OPTICAL, COAXIAL, HDMI 1, HDMI 2, HDMI ARC** mode.
- 3 Operate your audio device directly for playback features.
- 4 Press the **VOL +/-** button to adjust the volume to your desired level.

### Tip:

- The unit may not be able to decode all digital audio formats from the input source. In this case, the unit will mute. This is NOT a defect. Ensure that the audio setting of the input source (e.g. TV, game console, DVD player, etc.) is set to **PCM** or **Dolby Digital** (Refer to the user manual of the input source device for its audio setting details) with HDMI IN 1 / HDMI 2 / HDMI ARC / OPTICAL / COAXIAL input.
- When selecting a different audio format, the unit will display the following as follows:

Audio (abbreviation)	Display
LPCM 2ch	PCM AUDIO
LPCM 5.1ch	PCM AUDIO
LPCM 7.1ch	PCM AUDIO
Dolby Digital	DOLBY AUDIO
Dolby TrueHD	DOLBY AUDIO
Dolby Digital Plus	DOLBY AUDIO
Dolby Atmos - Dolby TrueHD	DOLBY ATMOS
Dolby Atmos - Dolby Digital Plus	DOLBY ATMOS




DTS	DTS
DTS Discrete Surround	DTS
DTS-ES 6.1 Matrix	DTS
DTS-ES 6.1 Discrete	DTS
DTS 96/24	DTS
DTS 96/24 ES Matrix	DTS
DTS Express	DTS
DTS-ES 8-Channel Discrete	DTS
DTS-HD High Resolution	DTS-HD
DTS-HD Master Audio	DTS-HD
DTS:X	DTS:X
DTS:X Master Audio	DTS:X

## 10. Bluetooth Operation

### 10.1 Pair Bluetooth-enabled Devices

The first time you connect your bluetooth device to this player, you need to pair your device to this player.

#### Note:

- The operational range between this player and a Bluetooth device is approximately 26 feet (8m) (without any object between the Bluetooth device and the unit).
  - Before you connect a Bluetooth device to this unit, ensure you know the device's capabilities.
  - Compatibility with all Bluetooth devices is not guaranteed.
  - Any obstacle between this unit and a Bluetooth device can reduce the operational range.
  - If the signal strength is weak, your Bluetooth receiver may disconnect, but it will re-enter pairing mode automatically.
- 1 During ON mode, press the  button repeatedly on the unit or the  button on the remote control to select Bluetooth mode. "NO BT" will show on the display if the unit is not paired to any Bluetooth device.
  - 2 Activate your Bluetooth device and select the search mode. "Hisense U5120GW+" will appear on your Bluetooth device list.
    - If you cannot find the unit, press and hold the  button to be searchable. The display will show "BT Pairing" and you will hear "Pairing" from the unit.
  - 3 Select "Hisense U5120GW+" in the pairing list. After successful pairing, you will hear "Paired" from the unit, and the display panel shows "BT\_IN".

- 4 Play music from the connected Bluetooth device.

**To disconnect the Bluetooth function, you can :**

- Switch to another function on the unit.
- Disable the function from your Bluetooth device. The Bluetooth device will be disconnected from the unit after the **"Disconnected"** voice prompt.
- Press and hold the **⌘** button.

**Tips:**

- Enter "0000" for the password if necessary.
- If no other Bluetooth device pairs with this player within two minutes, the player will recover its previous connection.
- The player will also be disconnected when your device is moved beyond the operational range.
- If you want to reconnect your device to this player, place it within the operational range.
- If the device is moved beyond the operational range, when it is brought back, please check if the device is still connected to the player.
- If the connection is lost, follow the instructions above to pair your device to the player again.

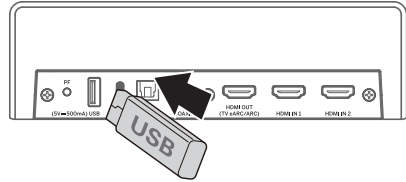
## 10.2 Listen to Music from Bluetooth Device

- If the connected Bluetooth device supports Advanced Audio Distribution Profile (A2DP), you can listen to the music stored on the device through the player.
  - If the device also supports Audio Video Remote Control Profile (AVRCP), you can use the player's remote control to play music stored on the device.
1. Pair your device with the player.
  2. Play music via your device (if it supports A2DP).
  3. Use supplied remote control to control play (if it supports AVRCP).

▶	Start, pause or resume play.
◀◀/▶▶	Skip to the previous or next track.

## 11. USB Operation

- 1 Insert the USB device.



- 2 Press the **⏮** button repeatedly on the unit or on the remote control to select **USB** mode.
- 3 During playback:

▶	Start, pause or resume play.
◀◀/▶▶	Skip to the previous or next track.

**Tips:**

- The unit can support USB devices with up to 32 GB of memory.
- This unit can play WAV / WMA / MP3 / FLAC / DSD / ALAC.
- This product may not be compatible with certain types of USB storage devices.
- If you use a USB extension cable, USB hub, or USB Multifunctional card reader, the USB storage device may not be recognized.
- Do not remove the USB storage device while reading files.

# 12.Setup Menu

- 1. During ON mode, press and hold the ►|| button for 3 seconds to open the menu.
- 2. Select the content with ◀◀/ ▶▶ buttons.
- 3. Change the initial values for each of the settings with VOL +/- buttons.
- 4. Press the ►|| button to confirm your selection and exit the settings.
- If no button is pressed within 15 seconds, the system will automatically exit the menu.

Display (press ◀◀/ ▶▶)	Description (press VOL + / - )
1 MUSIC	Select Equalizer (EQ) Effect. (MUSIC, MOVIE, NEWS, SPORT, NIGHT, GAME, AI EQ)
2 SUR ON	Switch Surround Sound [ON / OFF]
3 BAS +S	Adjust the Bass Level
4 TRE +S	Adjust the Treble Level
5 DIM H	Adjust the Brightness (Exit menu to take effect)
6 AUTO WAKE ON	Switch Auto Wake [ON / OFF]
7 AUTO STANDBY ON	Switch Auto Standby [ON / OFF]
8 NO REAR	If there is no surround connection. Not adjustable.
SUR +S	If there is surround connected. Adjust the surround speakers Volume
9 LT 00	Set the Audio Delay (AV SYNC)
10 HI-RES REMASTER ON	Switch: HI-RES Remaster [ON / OFF]
11 DTS NEURAL ON	Switch: Dts Neural [ON / OFF]
12 DTS DRC HEAVY	Switch: Dts Drc Heavy / Dts Drc Mid / Dts Drc Min
13 DTS 00	Dts Dialog Control Value

## 13. Troubleshooting

To keep the warranty valid, never try to repair the system yourself. If you encounter problems when using this unit, check the following points before requesting service.




### No power

- Ensure that the AC cord of the apparatus is properly connected.
- Ensure that there is power at the AC outlet.
- Press standby button to turn the unit on.

### Remote control does not work

- Before you press any playback control button, first select the correct source.
- Reduce the distance between the remote control and the unit.
- Insert the battery with its polarities (+/-) aligned as indicated.
- Replace the battery.
- Aim the remote control directly at the sensor on the front of the unit.

### No sound

- Make sure that the unit is not muted. Press  or VOL+/- button to resume normal listening.
- Press  button on the unit or on the remote control to switch the soundbar to standby mode. Then press the  button again to switch the soundbar on.
- Unplug both the soundbar and the subwoofer from the mains socket, then plug them again. Switch on the soundbar.
- Ensure the audio setting of the input source (e.g. TV, game console, DVD player, etc.) is set to PCM or Dolby Digital mode while using digital (e.g. HDMI, OPTICAL, COAXIAL) connection.
- The subwoofer is out of range, please move the subwoofer closer to the soundbar. Make sure the subwoofer is within 5 m of the soundbar (the closer the better).
- The soundbar may have lost connection with the subwoofer. Re-pair the units by following the steps on the section "Pairing the Wireless Subwoofer with the Soundbar".
- The unit may not be able to decode all digital audio formats from the input source. In this case, the unit will mute. This is NOT a defect. device is not muted.

### I can't find the Bluetooth name of this unit on my Bluetooth device for Bluetooth pairing

- Ensure the Bluetooth function is activated on your Bluetooth device.
- Ensure you have paired the unit with your Bluetooth device.

### The Soundbar turns off

- When the unit's external input signal level is too low, the Sound Bar will be automatically turn off after 15 minutes. Please increase the volume level of your external device.

### The subwoofer is idle or the indicator of subwoofer do not light up.

- Please unplug power cord from the mains socket, and plug it in again after 4 minutes to reset the subwoofer.

### Wi-Fi

#### Wi-Fi connection cannot be established.

- Check the availability of WLAN network on the router.
- Place the Wi-Fi router closer to the unit.
- Make sure the password is correct.
- Check the WLAN function or reboot the modem and Wi-Fi router.

### Play-Fi

#### Cannot discover the Play-Fi supported devices from the app.

Make sure the device is connected to the Wi-Fi.

#### Cannot play Play-Fi music.

- Certain network service or contents available through the device may not be accessible in case the service provider terminates its service.
- When the first time setup is not successful, close the DTS Play-Fi. Restart the app.
- When the speaker is set as Stereo Pairs or Surround Sound, the speaker need to be disconnected in the app before being used separately.

## 14.Specifications

<b>Model Name</b>	U5120GW+
<b>Soundbar</b>	
Power Supply	AC 100-240V~ 50/60Hz
Power Consumption	45 W
Standby Consumption	< 0.5 W
USB port for playback USB Compatibility USB Playback support / file formats	5V --- 500mA Hi-Speed USB (2.0) / FAT32 / FAT16 32G (max) , WAV/WMMA/MP3/FLAC/DSD/ALAC
TYPE-C for the Dongle of wireless rear speaker	5V --- 500mA
Dimension (WxHxD)	1200 x 75 x 112 mm / 47.2" x 2.9" x 4.4
Net weight	5 kg / 11 lbs
Frequency Response	120Hz ~ 40KHz
Operating Humidity Range	40% ~ 60%
Operating Temperature	0°C - 45°C
<b>Wireless Specification</b>	
Network supported	WiFi IEEE 802.11a/b/g/n/ac Wireless Frequency Band (Wi-Fi) / Radio Frequency Power Transmitted (EIRP) 2.4G Wi-Fi: 2400 MHz~2483.5 MHz / ≤20dBm 5.1G Wi-Fi: 5150 MHz~5350 MHz / ≤20dBm 5.8G Wi-Fi: 5725 MHz~5850 MHz / ≤14dBm
Bluetooth version / profiles Bluetooth frequency range Bluetooth Max. transmitting power (EIRP)	V 4.2 (A2DP, AVRCP) 2400 MHz ~ 2483.5 MHz ≤ 5 dBm
2.4G Wireless frequency range 2.4G Max. transmitting power (EIRP)	2400 MHz ~ 2483 MHz ≤ 10 dBm
5.8G Wireless frequency range 5.8G Max. transmitting power (EIRP)	5725 MHz ~ 5850 MHz ≤ 3 dBm
Modulation Type	GFSK, π/4 DQPSK
<b>Subwoofer</b>	
Power Supply	AC 100-240V~ 50/60Hz
Power Consumption	50 W / < 0.5 W (StandBy)
Dimension (WxHxD)	250 x 355 x 250 mm / 9.8" x 14" x 9.8"
Net weight	7 kg / 15.4 lbs
Frequency Response	40Hz~120Hz
<b>Rear Speakers</b>	
Power Supply	AC 100-240V~ 50/60Hz
Power Consumption	15 W / < 0.5 W (StandBy)
Speaker impedance	8 Ω (2.5" X 2)
Dimension (WxHxD)	91 x 144 x 113 mm / 3.6" x 5.6" x 4.4"
Net weight	0.7 kg / 1.5 lbs
Frequency Response	40Hz~120Hz
<b>Amplifier (audio output power)</b>	
Soundbar	330 W (30 W x 11)
Subwoofer	180 W
Rear speaker	60W (30Wx2)
Total	570 W
<b>Remote Control</b>	
Distance/Angle	19.7 feet (6m) / 30°
Battery type	AAA (1.5V X 2)

# **Hisense**

---

U5120GW+

