

Hisense

EN

Quick Start Guide

2.1 CH SoundBar with Wireless Subwoofer Model: HS212F



- ✓ Simple setup
- ✓ One remote
- ✓ Quick settings



Manufactured under license from Dolby Laboratories. Dolby, Dolby Audio, and the double-D symbol are trademarks of Dolby Laboratories Licensing Corporation.



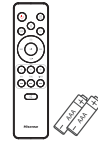
What's in the Box



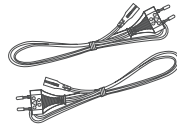
Main Unit



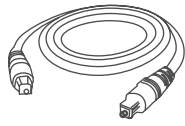
Wireless Subwoofer



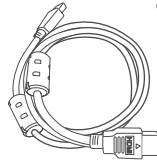
Remote Control



AC Power Cord
x2



Optical Cable



HDMI Cable



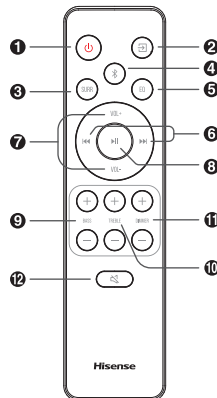
Wall Mounting Kit



User Manual/
Quick Start Guide

1 Remote Control

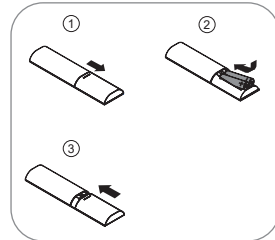
- ⏻ Switch the unit between ON and STANDBY mode.
- 📺 (SOURCE) Select the play mode.
- SURR Adjust the surround ON/OFF.
- 📶 (BT) Select the Bluetooth mode.
- EQ Select MUSIC/MOVIE/NEWS/SPORT/NIGHT sound effect.
- ⏮️/⏭️ Skip to previous/next track in BT/USB mode.
- VOL+/VOL- Increase/decrease the volume level.
- ⏸️ Play/pause/resume playback in BT/USB mode. Press and hold to activate the pairing function in Bluetooth mode or disconnect the existing paired Bluetooth device.
- BASS+/- Increase/decrease the bass level.
- TREBLE+/- Increase/decrease the treble level.
- DIMMER+/- Adjust display brightness.
- 🔇 (MUTE) Mute or resume the volume.



First-time use:

Put the 2 x AAA batteries (included) into the remote control before use.

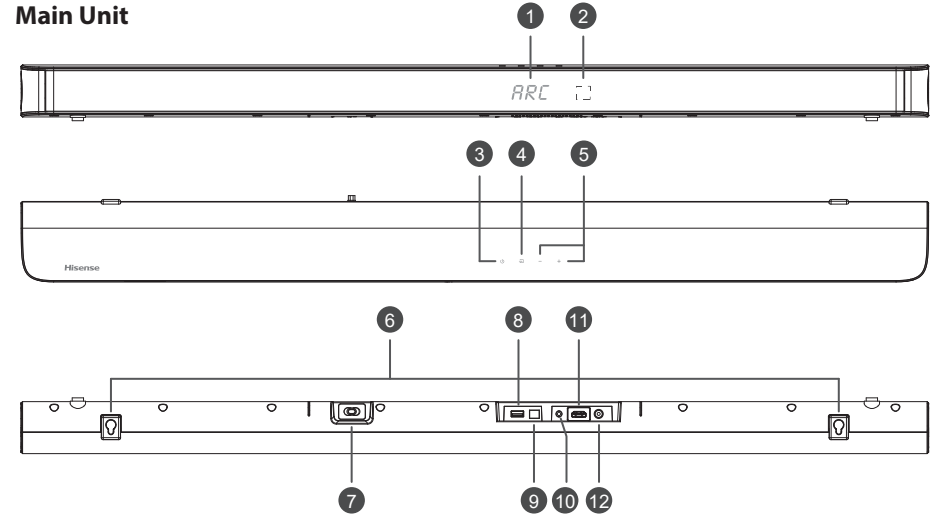
Replace the Remote Control Battery:



⚠️ Do not expose the battery or battery pack to fire or other direct heat sources.

2 Identifying the Parts

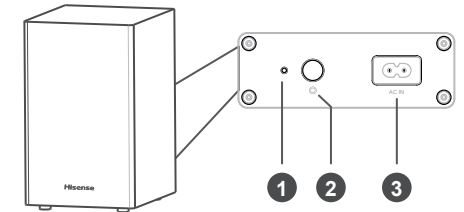
Main Unit



- Display Window**
Show the current status.
- Remote Control Sensor**
Receive signal from the remote control.
- ⏻ (ON/OFF) Button
Switch the unit between ON and STANDBY mode.
- 📺 (SOURCE) Button
Select the play mode.
- +/- (Vol+/Vol-) Buttons
Increase/decrease the volume level.
- Wall Mount**
Install the wall mounting screws into the wall mount of the unit.
- AC IN Socket**
Connect to the power supply.
- USB Socket**
Insert the USB device to play music.
- OPTICAL Socket**
Connect to an optical audio output on the TV.
- AUX Socket**
Connect to an external audio device.
- HDMI ARC Socket**
Connect to a TV via HDMI cable.
- COAXIAL Socket**
Connect to a coaxial audio output on the TV.

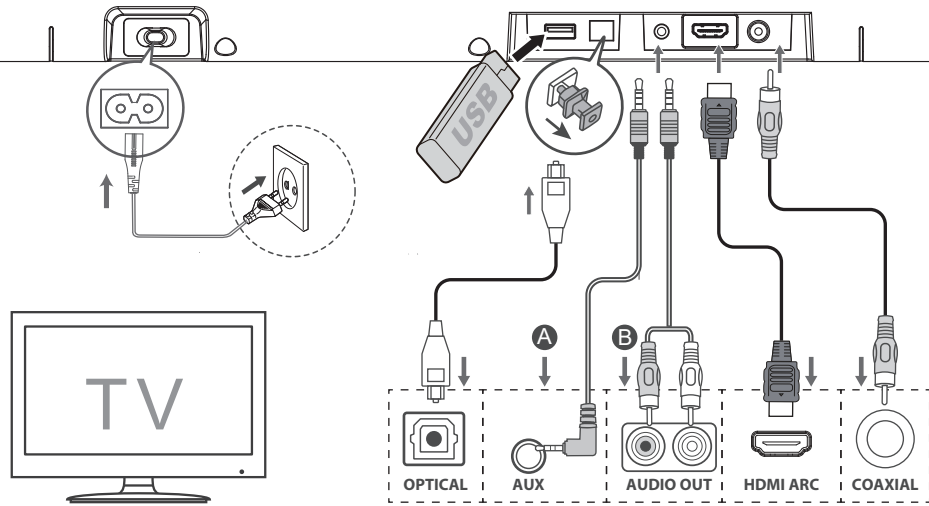
Wireless Subwoofer

- PAIR Indicator**
Light up solidly when the pairing succeed.
- Reset Button**
Reset the unit and broadcast the bluetooth version.
- AC IN Socket**
Connect to power supply.



3 Connections

- Before connecting the AC power cord, ensure you have completed all other connections.



4 Basic Operation

Standby/On

When you first connect the main unit to the mains socket, the main unit will be in **STANDBY** mode.

- Press the **⏻** button on the unit or on the remote control to switch the unit **ON**.
- Press the **⏻** button again to switch the unit back to **STANDBY** mode.
- Disconnect the mains plug from the mains socket if you want to switch the unit **OFF** completely.

Auto Wake

- If a TV or an external device is connected (AUX / OPTICAL / COAXIAL / HDMI ARC), the unit will switch on automatically when the TV or the external device is switched on.

How to Enable Auto Wake

- Short press the **☑** (SOURCE) button and **+** (VOL +) button on the unit to enable or disable Auto Wake function.
- Auto Wake On: white and green LED blink twice sequentially. While in **STANDBY** mode, the **RED** LED is breathing.
- Auto Wake Off: white and red LED blink twice sequentially. While in **STANDBY** mode, the **LED** is in solid red.

Automatic Power Off Function

The unit automatically turns to **STANDBY** mode after about **15** minutes if the TV or the external unit is disconnected, switched off.

- To switch the unit off completely, remove the mains plug from the mains socket.
- Please turn the unit off completely to save energy when not in use.

Select Modes

Press the **☑** (SOURCE) button repeatedly on the unit or on the remote control to select the **OPTICAL, COAXIAL, HDMI ARC, BT** (Bluetooth), **USB, AUX** mode.

The selected mode will show on the display.

Adjust the Bass/Treble Level

- Press **TREBLE +/-** button to increase or decrease the treble. (treble+5 / treble-5)
- Press **BASS +/-** button to increase or decrease the bass. (bass+5 / bass-5)
- After about 3 seconds, the unit will exit from bass/treble setting. The display will show the current selected mode. You may now press the **VOL+ / -** buttons to adjust volume.

Turn the Surround Sound ON/OFF

- Press the **SURR** button on the remote control to turn on the surround sound. Press this button again to turn off the surround sound.

Adjust the Volume

- Press the **+ / -** buttons on the unit or **VOL+ / VOL-** on the remote control to adjust the volume.
- If you wish to turn the sound off, press the **MUTE** button on the remote control. Press

the **MUTE** button again or press the **VOL+ / VOL-** buttons to resume normal listening.

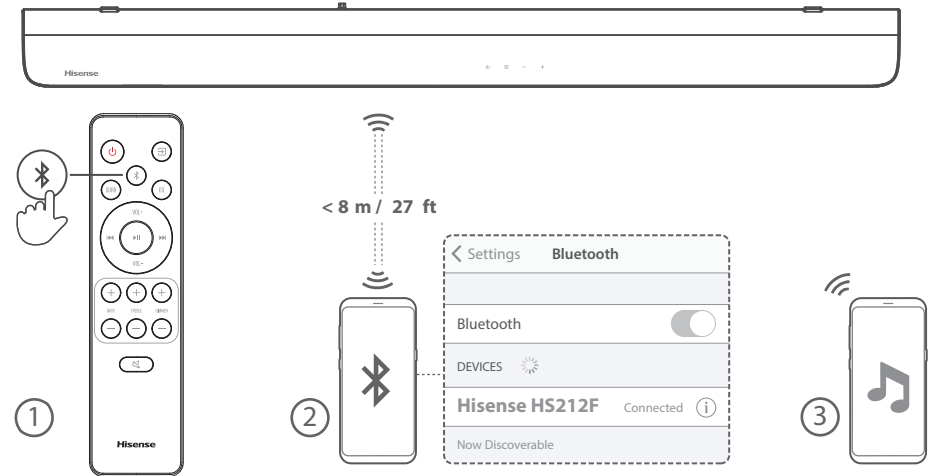
Adjust the Brightness

- Press the **DIMMER +/-** buttons on the remote control to select brightness level.

Select a Preset Sound Effect

- While playing, press the **EQ** button on the remote control to select desired preset equalizers: **MUSIC, MOVIE, NEWS, SPORT, NIGHT**.

5 Bluetooth(📶) Operation



6 Wall Mounting

